



STANDARD MODULAR BOXES & ACCESSORIES:

- TMB 1-2.5:** 11 x 8 ¼ x 2 ½ (Outside Dim.) 9 ¼ x 6 5/8 x 2 3/8 (Inside Dim.)
 TMD 122 Long Divider: 2 ¼ (Height); 5 ea. max
 TMD 112 Short Divider: 2 ¼ (Height); 7 ea. max
 TML 1 Lid: 0.5 lbs.
- TMB 1-3.5:** 11 x 8 ¼ x 3 ½ (Outside Dim.) 9 ¼ x 6 5/8 x 2 3/8 (Inside Dim.)
 TMD 123 Long Divider: 3 ¼ (Height); 5 ea. max
 TMD 113 Short Divider: 3 ¼ (Height); 7 ea. max
 TML 1 Lid: 0.5 lbs.
- TMB 1-5:** 11 x 8 ¼ x 5 (Outside Dim.) 9 ¼ x 6 5/8 x 4 7/8 (Inside Dim.)
 TMD 125 Long Divider: 4 ½ (Height); 5 ea. max.
 TMD 115 Short Divider: 4 ½ (Height); 7 ea. max.
 TML 1 Lid: 0.5 lbs.
- TMB 2-2.5:** 16 ½ x 11 x 2 ½ (Outside Dim.) 15 x 9 3/8 x 2 3/8 (Inside Dim.)
 TMD 222 Long Divider: 2 ¼ (Height); 7 ea. max.
 TMD 212 Short Divider: 2 ¼ (Height); 11 ea. max.
 TML 2 Lid: 0.8 lbs.
- TMB 2-3.5:** 16 ½ x 11 x 3 ½ (Outside Dim.) 15 x 9 3/8 x 3 3/8 (Inside Dim.)
 TMD 223 Long Divider: 3 ¼ (Height); 7 ea. max
 TMD 213 Short Divider: 3 ¼ (Height); 11 ea. max
 TML 2 Lid: 0.8 lbs.
- TMB 2-5:** 16 ½ x 11 x 5 (Outside Dim.) 15 x 9 3/8 x 4 3/8 (Inside Dim.)
 TMD 225 Long Divider: 4 ½ (Height); 7 ea. max
 TMD 215 Short Divider: 4 ½ (Height); 11 ea. max
 TML 2 Lid: 0.8 lbs.
- TMB 2-6:** 16 ½ x 11 x 6 (Outside Dim.) 15 x 9 3/8 x 5 3/8 (Inside Dim.)
 TMD 226 Long Divider: 5 ¾ (Height); 7 ea. max
 TMD 216 Short Divider: 5 ¾ (Height); 11 ea. max
 TML 2 Lid: 0.8 lbs.
- TMB 2-7:** 16 ½ x 11 x 7 (Outside Dim.) 15 x 9 3/8 x 6 3/8 (Inside Dim.)
 TMD 227 Long Divider: 6 ½ (Height); 7 ea. max
 TMD 217 Short Divider: 6 ½ (Height); 11 ea. max
 TML 2 Lid: 0.8 lbs.

- TMB 2-8:** 16 ½ x 11 x 8 (Outside Dim.) 15 x 9 ¾ x 7 ¾ (Inside Dim.)
TMD 228 Long Divider: 7 ¾ (Height); 7 ea. max
TMD 218 Short Divider: 7 ¾ (Height); 11 ea. max
TML 2 Lid: 0.8 lbs.
- TMB 3-3.5 RD:** 22 ¾ x 17 ½ x 3 ½ (Outside Dim.) 20 x 15 x 2 ¾ (Inside Dim.)
TMD 323 Long Divider: 3 ¼ (Height); 11 ea. max
TMD 313 Short Divider: 3 ¼ (Height); 15 ea. max
TML 3 Lid: 1.6 lbs.
- TMB 3-3.5 HD:** 22 ¾ x 17 ½ x 3 ½ (Outside Dim.) 20 x 15 x 2 ¾ (Inside Dim.)
3" Long Divider: 3 ¼ (Height); 11 ea. max
3" Short Divider: 3 ¼ (Height); 15 ea. max
TML 3 Lid: 1.6 lbs.
- TMB 3-5:** 22 ¾ x 17 ½ x 5 (Outside Dim.) 20 x 15 x 4 7/8 (Inside Dim.)
TMD 325 Long Divider: 4 ½ (Height); 11 ea. max
TMD 315 Short Divider: 4 ½ (Height); 15 ea. max
TML 3 Lid: 1.6 lbs.
- TMB 3-6 RD:** 22 ¾ x 17 ½ x 6 (Outside Dim.) 20 x 15 x 5 7/8 (Inside Dim.)
TMD 326 Long Divider: 5 ¾ (Height); 11 ea. max
TMD 316 Short Divider: 5 ¾ (Height); 15 ea. max
TML 3 Lid: 1.6 lbs.
- TMB 3-6 HD:** 22 ¾ x 17 ½ x 6 (Outside Dim.) 20 x 15 x 5 7/8 (Inside Dim.)
6" Long Divider: 5 ¾ (Height); 11 ea. max
6" Short Divider: 5 ¾ (Height); 15 ea. max
TML 3 Lid: 1.6 lbs.
- TMB 3-7:** 22 ¾ x 17 ½ x 7 (Outside Dim.) 20 x 15 x 6 7/8 (Inside Dim.)
TMD 327 Long Divider: 6 ½ (Height); 11 ea. max
TMD 317 Short Divider: 6 ½ (Height); 15 ea. max
TML 3 Lid: 1.6 lbs.
- TMB 3-8:** 22 ¾ x 17 ½ x 8 (Outside Dim.) 20 x 15 x 7 7/8 (Inside Dim.)
TMD 328 Long Divider: 7 ¾ (Height); 11 ea. max
TMD 318 Short Divider: 7 ¾ (Height); 15 ea. max
TML 3 Lid: 1.6 lbs.
- TMB 3-10:** 22 ¾ x 17 ½ x 10 (Outside Dim.) 20 x 15 x 9 7/8 (Inside Dim.)
TMD 3210 Long Divider: 9 7/8 (Height); 11 ea. max
TMD 3110 Short Divider: 9 7/8 (Height); 15 ea. Max
TML 3 Lid: 1.6 lbs.
- TMB 3-12:** 22 ¾ x 17 ½ x 12 (Outside Dim.) 20 x 15 x 9 7/8 (Inside Dim.)
TMD 3212 Long Divider: 10 ¾ (Height); 11 ea. Max
TMD 3112 Short Divider: 10 ¾ (Height); 15 ea. Max
TML 3 Lid: 1.6 lbs.

TICKET HOLDERS:

TH-3: 6 ¼ x 1 ½ (Maximum Card Size)	6 ½ x 2 ¼ (Dimensions)
TH-5: 6 ¼ x 3 ¾ (Maximum Card Size)	6 ½ x 4 ½ (Dimensions)
TH-6: 5 ¼ x 3 (Maximum Card Size)	5 ½ x 3 ¾ (Dimensions)
TH-7: 7 ¼ x 3 ½ (Maximum Card Size)	7 ¾ x 4 ¼ (Dimensions)
TH-9: 8 ¾ x 4 (Maximum Card Size)	9 x 4 ¾ (Dimensions)
TH-15: 6 ¼ x 2 1/8 (Maximum Card Size)	6 ½ x 2 7/8 (Dimensions)
TH-16: 6 ¼ x 4 ¼ (Maximum Card Size)	6 ½ x 5 (Dimensions)
TH-24: 4 ¼ x 2 1/8 (Maximum Card Size)	4 ½ x 2 7/8 (Dimensions)
TH-58: 8 x 5 (Maximum Card Size)	8 ½ x 6 ¼ (Dimensions)

MEAT LUGS & UTILITY BOXES

ML7: 25 x 18 ½ x 6 7/8 (Outside Dim.)	23 1/16 x 16 5/8 x 6 ¾ (Top Inside Dim.) 20 x 13 ½ (Bottom Inside Dim.)
ML8: 26 ¼ x 16 ¼ x 8 (Outside Dim.)	23 ¾ x 13 ¼ x 7 ¾ (Top Inside Dim.) 21 ¼ x 11 ¼ (Bottom Inside Dim.)
ML10: 25 1/8 x 18 ¼ x 9 7/8 (Outside Dim.)	23 ¼ x 16 5/8 x 9 5/8 (Top Inside Dim.) 19 ¾ x 12 ¾ (Bottom Inside Dim.)
ML14: 26 x 19 ¾ x 13 5/8 (Outside Dim.)	24 ¼ x 17 7/8 x 13 3/8 (Top Inside Dim.) 19 ¼ x 12 ½ (Bottom Inside Dim.)
MLL14: Lid	
UB 2616: 26 1/8 x 16 x 7 7/8 (Outside Dim.)	21 ½ x 13 5/8 x 7 ¾ (Top Inside Dim.) 21 ½ x 11 ½ (Bottom Inside Dim.)
UB 2716: 26 ½ x 16 x 5 1/8 (Outside Dim.)	23 5/8 x 13 5/8 x 5 (Top Inside Dim.) 22 x 12 1/8 (Bottom Inside Dim.)
UB 2720: 27 X 19 5/8 x 4 7/8 x (Outside Dim.)	18 x 4 ½ x 23 1/8 (Top Inside Dim.) 23 1/8 x 16 ½ (Bottom Inside Dim.)
UB 2921: 24 x 20 ¾ x 5 ½ (Outside Dim.)	26 ½ x 18 ¼ x 5 (Top Inside Dim.) 25 ¼ x 17 (Bottom Inside Dim.)

STACK & NEXT BOXES/ SMALL PARTS TRAYS

SN 2417: 24 x 16 5/8 x 7 7/8 (Outside Dim.)	22 ¾ x 15 ¼ x 7 ¾ (Top Inside Dim.) 20 x ¾ x 14 (Bottom Inside Dim.)
SNL 2516: Lid for SN 2516	
SN 2516 DB: Drain Board for SN 2516	
SP 1711: 16 5/8 x 11 x 3 ¼ (Outside Dim.)	15 ½ x 9 ¾ x 3 1/8 (Top Inside Dim.)



(TMB 1-3 Overhead)



(TMB 1-3 Low-Angle)



(TMB 2-5 Overhead)



(TMB 2-5 Low-Angle)



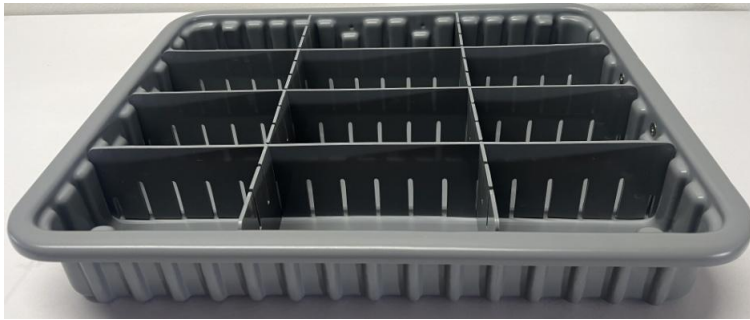
(TMB 2-8 Overhead)



(TMB 2-8 Low-Angle)



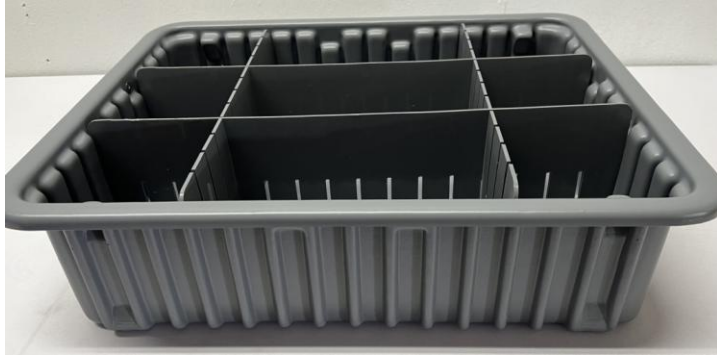
(TMB 3-3.5 HD Overhead)
Dividers sold separately



(TMB 3-3.5 HD Low-Angle)
Dividers sold separately



(TMB 3-6 HD Overhead)
Dividers sold separately



(TMB 3-6 HD Low-Angle)
Dividers sold separately